

Street light set



K416

Application

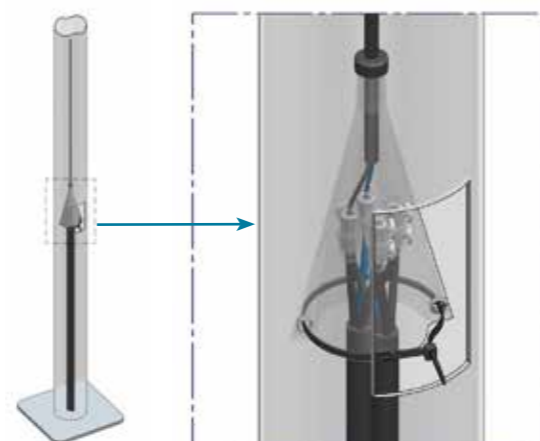
This street light set is designed to interconnect a network with a street light installation inside a lighting column.

Description

- This set comprises:
 - 4 mechanical sleeves,
 - 1 protective cover.
- The mechanical sleeves are made of brass and accept up to 3 conductors of 10mm². The conductor(s) must be stripped over 17mm before installation. Tightening is ensured by two 4mm hollow hexagonal screws. Each sleeve is covered with a hard transparent synthetic material enclosure providing good protection during and after installation. The sleeves have an IP2X protection degree.
- The protective cover is made of impermeable synthetic materials. It is equipped with a watertight inlet seal on the upper part avoiding water penetration on the connector, and a cable tie on the lower part enabling the enclosure to perfectly fit network cables.

Installation

- 1 Insert the cable from the lighting column through the seal entrance.
- 2 Slide the enclosure upwards.
- 3 Implement the connectors.
- 4 Slide the enclosure down over the connectors.
- 5 Tighten the cable tie around the network cables.



Lighting column

Code	Designation	Weight (kg)	Sales unit
K416	STREET LIGHT SET	0.350	10

Cold shrink end cap



P414

Application

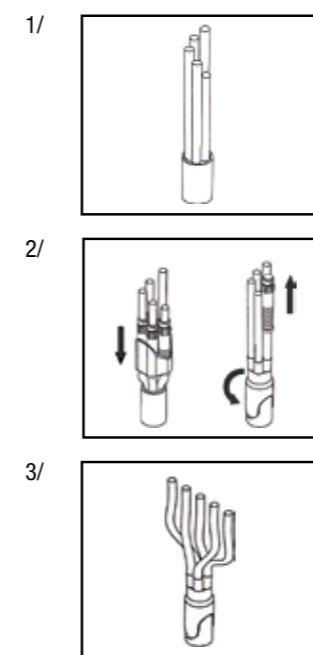
This end cap is designed to ensure street light conductor insulation when fitted at its end. It is mainly used on the bottom of lighting column.

Description

- The end cap is implemented without flame thanks to cold shrink technology.
- Depending on the model, it is made of an end cap with 4 or 5 movable guides enabling for correct conductors insertion.
- The material used is designed to ensure good UV resistance.
- Conductor capacity is 6-16mm² according to the **NF C 32-321** standard.

This product meets the criteria of the **HN 68-S-24** standard.

End installation



- Remove the sheath of the cable over the required length.
- Cut the conductors in a stair shape to facilitate assembly.

- Place the conductors from the longest to the shortest in the open guides.
- Fully insert the end cap.
- Turn over the end cap using the tabs.
- Remove the guides.

- Shape and cut the conductors to the required length.

Code	Designation	Weight (kg)	Sales unit
BC001	STREET LIGHT END CAP EE2TF 6-16	0.012	10
P415	STREET LIGHT END CAP EE3TF 6-16	0.012	10
P414	STREET LIGHT END CAP EE4TF 6-16	0.012	10
P419	STREET LIGHT END CAP EE5TF 6-16	0.012	10